



Wolfe Street Academy  
A BCP School

# FAMILY HANDBOOK

WELCOME TO OUR SCHOOL

245 S. Wolfe Street  
Baltimore, MD 21231

# Table of contents

<u>Welcome Message</u>	01
<u>Vision and Mission</u>	02
<u>Baltimore Curriculum Project</u>	03
<u>Contact Information</u>	06
<u>Daily Information</u>	07
<u>School Policies</u>	12
<u>Academics</u>	16
<u>Student Support</u>	20
<u>Communication and Involvement</u>	25
<u>Staff Directory</u>	26





# From the Principal



**Mark Gaither**  
*Principal*

## Welcome to Wolfe Street Academy!

The power of our community has always rested on the relationships we build between it's members. The information you will find in this Family Handbook will offer you some of the basics regarding our policies, goals, and the members of our staff that make Wolfe Street Academy great.

But this is just the beginning of getting to know each other and building the trusting relationship that will bring success to your child, our students, and the school community as a whole.

Just as important as first impressions, basic knowledge is the understanding that everyone in our community is here to help, here to guide, here to answer questions, and problem solve. Use the contact information in this handbook as your window into how to get your questions answered. We love to hear from our families!

Get ready for a great school year! It is always wonderful when we are together as a community working toward our common goals of success.

# Vision and Mission

## Vision



WSA seeks to educate and empower all children and community members by providing an experience that prioritizes the whole child and develops a love of learning. We honor the diversity within our staff, students, and community at large, holding each other accountable to have respect for ourselves and others as well as a willingness to take on the responsibilities for helping create a positive future.

## Mission



### Great People

- Recruit, develop, and retain a highly qualified, diverse, deeply engaged staff with the singular focus of advancing student academic and social development through data analysis and differentiated strategies.
- Create long term, trusting relationships with and between families, staff, partners, neighbors, and other community members.

### Great Programs

- Identify and implement rigorous academic programming guided by data.
- Provide professional development for all staff in academic and social emotional learning for quality implementation of programmatic goals.

### Great Strategies

- Identify and leverage strengths and partnerships to meet community needs through the Community School strategy.
- Be an exemplar of successful Community School strategy implementation for schools in Baltimore City, Maryland and the nation.





Laura Doherty  
President and CEO



## BALTIMORE CURRICULUM PROJECT



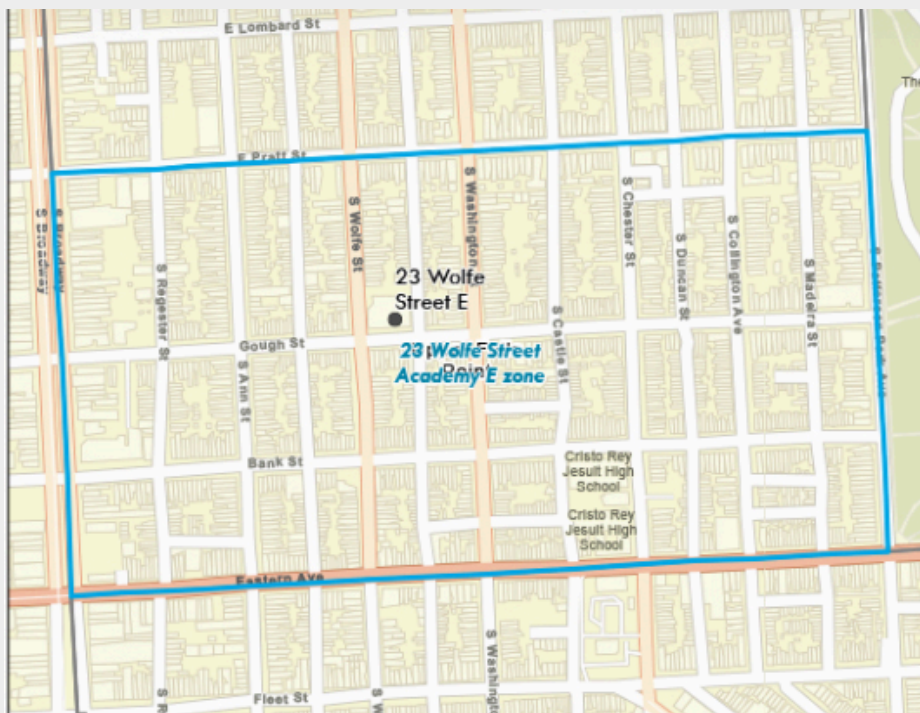
Wolfe Street Academy converted to a neighborhood charter school in 2007. Still serving all students in our neighborhood's zone, we also have the flexibility to enroll those who live outside the zone based on seat availability. Baltimore Curriculum Project is the charter operator at Wolfe Street Academy.

Baltimore Curriculum Project (BCP) is the largest operator of local neighborhood, public charter schools in Maryland. We create safe, supportive learning environments for children by providing innovative, research-based educational strategies, intensive teacher training, and extensive support for administration and staff. We support our local neighborhood needs by tailoring our resources and support through community partnerships. As one of the longest-running charter operators in Maryland, our schools are regularly recognized as some of the most highly acclaimed neighborhood charter schools in the state.

## Neighborhood / Zone enrollment

Wolfe Street Academy serves its neighborhood zone (21231) which includes Upper Fells Point and Fells Point neighborhoods. Any child living or moving into the neighborhood may enroll at any time, without participating in a lottery. If you live in this zone, call or email the school to enroll.

If you live out of the zone, you may still apply to enroll your child at Wolfe Street Academy. If there are no vacancies at the time, students may be added to a waitlist or upcoming lottery.



## What's after Wolfe Street Academy?

Wolfe Street Academy is a feeder school for Commodore John Rodgers Middle School #27. Therefore, students at WSA will automatically be enrolled at Commodore John Rogers unless families apply to other charter or city-wide middle school opportunities. The school choice liaison at Wolfe will help guide families through this process.

# Title I Status

## What does it mean?



Wolfe Street Academy is a Title I school. Title I is part of the Every Student Succeeds Act (ESSA). The purpose of this Title Grant is to provide all children significant opportunity to receive a fair, equitable, and high-quality education, and to close educational achievement gaps. Title I provides financial assistance to local educational agencies (LEAs) and schools with high numbers or high percentages of children from low-income families to help ensure that all children meet challenging academic standards. Title I funds support social-emotional learning, extra instruction in reading and mathematics, additional teachers, materials of instruction, as well as after-school and summer programs to extend and reinforce the regular school curriculum. All twenty-four LEAs in Maryland receive Title I funds.

## What does it mean for my child?



At Wolfe Street Academy, we increase the number of highly qualified staff members through our Title I Grant allocation. Each year we are able to add approximately 1.5 staff members. The addition of staff members allows us to more closely address the individual needs of our students, as well as, the needs of our families. In addition to funding staff positions a small amount of Title I funds pays for student materials and supplies.

---

Information was obtained from [MSDE Title I information page](#).



# Contact Information



## Wolfe Street Academy

**Address:** 245 S. Wolfe Street Baltimore, MD 21231

**Phone number:** 410-396-9140

**Office hours:** 7:45-3:45

## Office Staff



Tiera Syndor-Jones  
Secretary



Yanina Chicas  
ESOL Paraeducator  
School Parent Liaison  
Habla Español

Check out our school website here!

[www.wolfestreetacademy.org](http://www.wolfestreetacademy.org)



---

# Daily Information



## School Hours



Start time: **7:45**



End time: **2:25**

## Arrival Procedure

Rear cafeteria door on Gough Street, opens at **7:05**.

Breakfast is served daily from 7:15-7:45.

School wide Morning Meeting is held from 7:35- 7:45.

Families are encouraged to attend!

The main doors and office are open after Morning Meeting.

## Dismissal Procedure

Pick up students at **2:25**

Each grade level exits from a different door.

**Pre-k:** Garden on Gough Street

**Kindergarten:** S Chapel Street door

**Grades 1, 2, 3:** Wolfe Street doors

**Grades 4, 5:** Gough Street Cafeteria door

# Daily Information



## Information about Pick up

Students may be picked up by a parent, guardian, or authorized adult. In the event of an emergency, we would appreciate a written notice with the name of the individual who will be picking up the child.

## Planned Early Release Hours



Start time: **7:45**



End time: **11:45**

If we have an early release, our school hours are 7:45 - 11:45. There is no After-School Program when school is dismissed early. Please pick up your child from the correct grade level pickup door.





---

# Daily Information



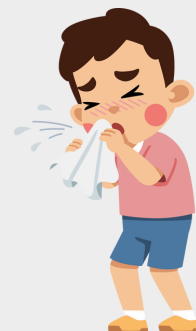
When is sick too sick for school?

## **Send me to school if....**

- I have a runny nose or just a little cough, but no other symptoms.
- I haven't taken any fever reducing medicine for 24 hours, and I haven't had a fever during that time.
- I haven't thrown up or had any diarrhea for 24 hours.

## **Keep me at home if...**

- I have a temperature higher than 100 degrees even after taking medicine
- I'm throwing up or have diarrhea, or have done so in the past 24 hours.
- My eyes are pink and crusty.



## **Call the doctor if...**

- I have a temperature higher than 100 degrees for more than two days.
- I've been throwing up or have diarrhea for more than two days.
- I've had the sniffles for more than week and they aren't getting better.
- I still have asthma symptoms after using my asthma medicine (call 911 if the child is having trouble breathing after using an inhaler.)

---

# Daily Information



## Nutrition

Each day students will receive breakfast and lunch provided by Wolfe Street Academy. If students are enrolled in the After School Program, they will receive a dinner as well.

## Daily Schedule

Each day student schedules will include the following subjects daily:

- Reading
- Language
- Mathematics
- Social Studies / Science / Health
- Intervention Period
- Resource: Art, PE, or Technology
- Lunch / Recess
- Classroom Circle



For a specific schedule of your child's day, please contact their classroom teacher.

## Uniforms

Wolfe Street Academy is a uniform-suggested school. Our uniform is a navy blue top and khaki pants/skirt. However, we do not require students to wear only the uniform. Please scan the QR code for more information from the district about school appropriate clothing.







---

# School Policy

## 1 Attendance

It is very important that students come to school each and every day on time. Students will be marked late after 7:45, including students who do not walk with their class when dismissed from Morning Meeting.

## 2 Excused Absences

If your child is absent for one of the lawful reasons listed below, parents must send a written note within three days of your child's return to school explaining the reason.

Absences are considered "excused" for the following reasons:

- Occasional student illness or behavioral health need
- Death in the immediate family
- Court summons (with the child's name on the summons)
- Religious holiday
- Official school closing (For example: a snow day)
- Activity sponsored and approved by the school
- Suspension
- Lack of authorized, district-provided transportation
- Other emergency as determined by City Schools' CEO or designee
- Deployment visitation with active duty/parents/guardians

---

# School Policy

## 3 Unexcused Absences

Absences for any other reason are **unexcused or “unlawful.”**

School staff will follow up with you about unexcused absences, as well as very frequent excused absences or lateness. The district will provide resources to help improve attendance but if the issue is not resolved, the matter may be referred to the Office of the State’s Attorney for Baltimore City.

Parents and guardians should note that any person with legal custody or care and control of a child between the ages of 5 and 18 is responsible for making sure that child goes to school or receives instruction. Not doing so is a misdemeanor that may result in a fine or imprisonment or both.

Whenever possible, parents and guardians should schedule children’s medical and other appointments outside of school hours.

When a late arrival or early dismissal can’t be avoided, a written note should be sent in with the child that school day.

---

# School Policy

## 4 Health and safety

Wolfe Street Academy has plans and procedures in place to keep students and staff members safe in an emergency. Schools are required to practice fire drills and other drills throughout the year, so that staff and students (including students with disabilities) are prepared to respond depending on the situation.

## 5 Student Privacy

As a parent/guardian of a Baltimore City Public Schools student, you have certain rights regarding your child's education records under the Family Educational Rights and Privacy Act (FERPA), applicable federal regulations, and the Code of Maryland Regulations (COMAR) 13A.08.02. They include,

1. Review of Student Records.
2. Amendment of Student Records.
3. Disclosure of Student Records.
4. Complaint to the U.S. Department of Education.

\*More information a may be found in the Baltimore City Public School Family Guide- Found on the Baltimore City - [Back to School Page](#)

## 6 Discrimination

City Schools is committed to using the Code of Conduct equitably and without discrimination based on a student's actual or perceived personal characteristics, which include race, ethnicity, color, ancestry, national origin, nationality, religion, sex, sexual orientation, gender, gender identity, gender expression, marital status, pregnancy or parenting status, family structure, ability (cognitive, social/emotional, and physical), veteran status, genetic information, age, immigration or citizenship status, socioeconomic status, language, or any other legally or constitutionally protected attributes or affiliations.



---

# School Policy

## 7 Weather and Emergency Closings

Wolfe Street Academy follows Baltimore City School's delays and closings. Please check the Facebook or Instagram sites of Wolfe Street Academy or Baltimore City Public Schools for information about closings or delays. You may also sign up for alerts from Baltimore City. For more information please use this QR code or [click this link](#).



## 8 Home School Compact

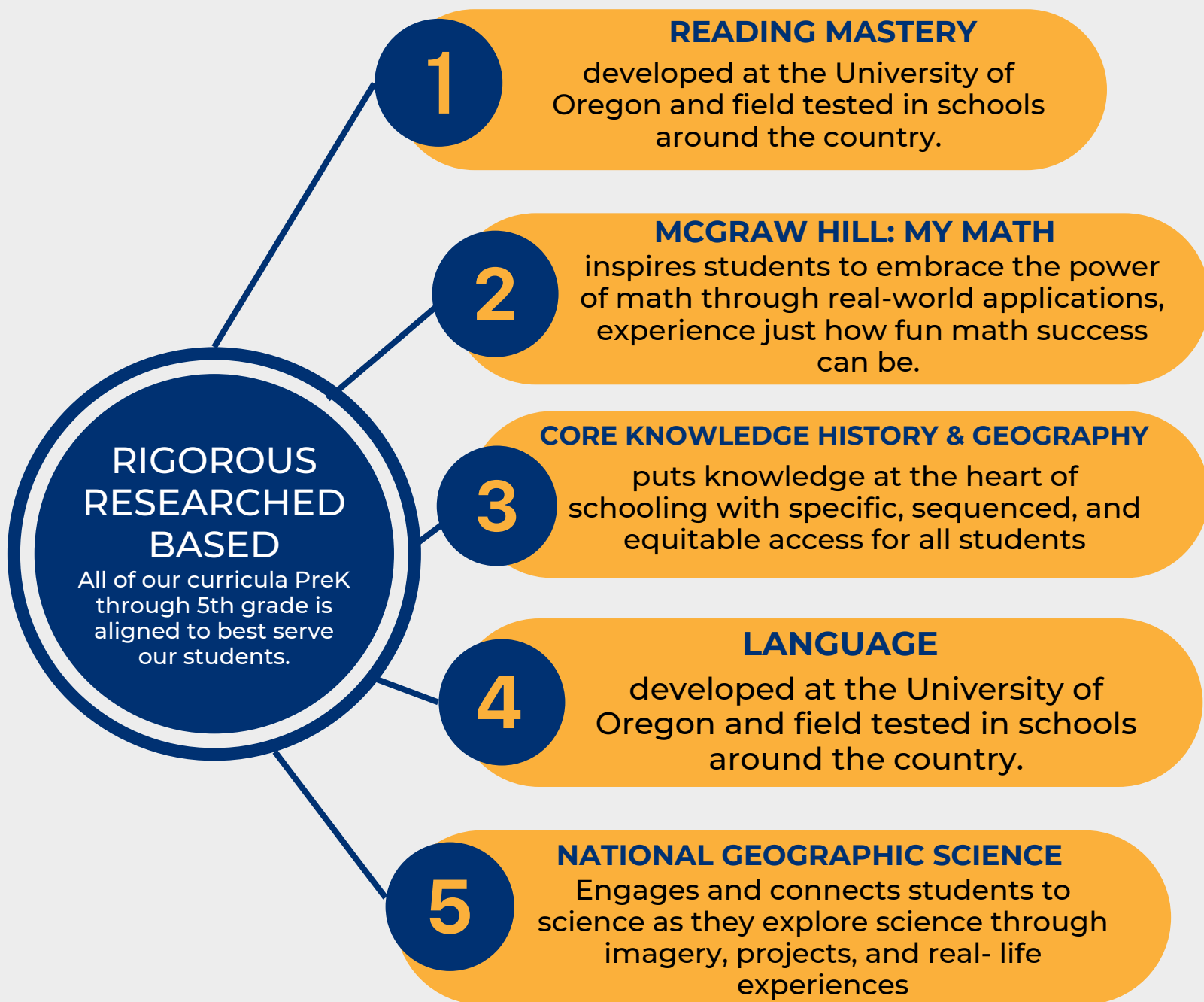
The Home School Compact is a written agreement between the school, families, and students that outlines the activities each stakeholder may undertake to share responsibility and partner for improved student academic achievement.

For more information contact, Mrs. Heidi Weiss-Beedie, Community School Coordinator [hweissbeedie@elev8baltimore.org](mailto:hweissbeedie@elev8baltimore.org)

## 9 Parent contact information

It is the **parent/guardian's responsibility** to update your contact information for the school. It is very important for routine communication and emergency situations. Please keep us up to date with your address, phone number, and email address if any of these change.

# Academics



For more information please contact:

Ms. Ashley Green, Academic Coach, at [atgreen@bcps.k12.md.us](mailto:atgreen@bcps.k12.md.us)



# Academics

## 1 Homework

For students to be truly successful in school, it is important to reinforce and practice skills nightly. Therefore, students receive homework Monday - Thursday. Homework varies in length and format by grade level. Please talk to your child's teacher if you have any questions.

\*Students are not disciplined for incomplete or missing homework  
[Grade level Homework Plan](#)

## 2 Grades

In all subjects except reading, students receive the grade calculated from their work in Infinite Campus. Reading grades are adjusted based on students' instructional placement compared to their grade level target. For any additional questions, please contact Ms. Ashley Green, Academic Coach- atgreen@bcps.k12.md.us

Report card grading marks are different for PreK-1 and 2-5. Pre-k submits only report card grades, they do not complete progress reports. Please see the grading scales below. Conduct is marked with numbers 1-3, with 1 meaning the student's learning behavior, attitude, and mannerisms in the learning environment are excellent.

Grading Scales						
Conduct Marks for Grades K-8	Subject Marks for Grades K- 1			Subject Marks for Grades 2-5		
	Letter	Meaning	Percentage	Letter	Meaning	Percentage
1- Excellent	P	Proficient	80-100	MS	Meeting Standards	80-100
2- Satisfactory	I	In Process	60-79	AS	Approaching Standards	70-79
3- Unsatisfactory	N	Needs Development	Below 60	DT	Developing Towards Standards	60-69
	NTQ	Not Taught this Quarter		NY	Not Yet demonstrating progress toward standards	59 or below
	INC	Incomplete		NTQ	Not Taught this Quarter	
	L	Late Enrollment		INC	Incomplete	
	PASS	Pass- 1st year ML only		L	Late Enrollment	
				PASS	Pass- 1st year ML only	

Read the comments for important information about your child's performance!

# Academics

## 3 Parent Portal- Infinite Campus

The convenient, 24/7 way to access schedules, attendance, grades, and more. For information on how to log into your portal, please look at the district guidance. Click on the following link or scan the QR code.

[Campus Portal Website](#) < click



## 4 Wolfe Testing



**What:** NWEA MAP Growth

**When:** Fall, Winter, Spring

**Why:** Tested on achievement and growth in Reading and Mathematics

**How:** Computer based test

**Who:** Kindergarten- 5th

**Note:** 5th grade students will take a Science portion of NWEA MAP as well.



# Academics

## 5 State Testing



**What:** WIDA MODEL

**When:** Fall, Spring

**Why:** Tested to assess English proficiency in Reading, Writing, Listening, & Speaking

**How:** Computer based test for Reading & Listening, Paper based for Writing, and one on one with teachers for Speaking

**Who:** Students in 1st - 5th grade in our English Language Development Program.



**What:** MCAP

**When:** Spring

**Why:** State assessment of grade level standards in English Language Arts and Mathematics

**How:** Computer based test

**Who:** 3rd, 4th, and 5th

**Note:** 5th grade students will complete a Science portion of MCAP as well.



**What:** WIDA ACCESS

**When:** Winter

**Why:** State assessment of English proficiency in Reading, Writing, Speaking, & Listening

**How:** Computer based test

**Who:** Kindergarten - 5th

---

# Student Support

## 1 Gifted and Talented Learners (GAL)

Wolfe Street Academy uses a variety of measures to identify and serve students who exhibit an exceptionally high level of performance. Our GAL Leads work to find the most appropriate way to support the gifted learner, which may include differentiated curricula, accelerated opportunities, and a variety of special projects. In alignment with the state & district protocols, each formally identified GAL Student receives an individualized learning plan that parents can access through Infinite Campus. For more information, reach out to Ms. Ashley Green - [atgreen@bcps.k12.md.us](mailto:atgreen@bcps.k12.md.us).

## 2 Intervention

Wolfe Street Academy provides targeted intervention to accelerate or remediate students growth in Math, Reading, or Writing. Our teachers use current data to group students and implement a specialized plan.

These plans could range from one on one instruction, small group instruction, computer based instruction, and specially identified programs.

# Student Support

## 3 English Language Development

Wolfe Street Academy serves our Multilingual Learners in a variety of ways. We employ an English as a Second Language (ESOL) teacher per grade level to support students while they learn both English and grade level content. ESOL teachers utilize many strategies to provide quality instruction in grade level content areas. Wolfe Street Academy also employs an ESOL Educational Associate to support grade levels and families. For more information, please contact Rachel Dorchak, ESOL Educational Associate, at [rldorchak@bcps.k12.md.us](mailto:rldorchak@bcps.k12.md.us)

## 4 Special Education

Wolfe Street Academy provides an inclusive community for students who require additional support services such as Special Education through an IEP (Individual Education Plan) or supports through a Section 504 plan. Our two special education teachers support our philosophy by pushing into the general education classroom to the greatest extent possible. We have a full team of related service providers to meet the needs of the students such as, but not limited to, Speech Language Pathologist, School Psychologist, School Social Worker, and Occupational Therapist.



# Student Wellness

At Wolfe Street Academy, we focus on teaching the whole child which includes social emotional learning. The resources that we use to support our students as they develop their social skills and learn ways to regulate their emotions are:

**Contact:**  
**Tiffany Long**  
tlong  
@baltimoreecp.org

## 1 Mindfulness Corners in each classroom



## 2 Mindfulness Room & peer conflict resolution



## 3 **second step** program

Our research based social emotional curriculum that teaches students growth mindset. Focusing on goal setting, emotion management, empathy & kindness, and problem solving skills.

## 4 Restorative Practices

community building circles, conflict resolution, and restorative circles.





# After School

Wolfe Street Academy hosts an after school program.

## **Basic information**

**When:** October - April

**Times:** 2:25-5:30

**Days:** Monday - Thursday

**Grades:** Kindergarten - 5th grade

## **How can I sign up?**

Admission is a lottery based.

1. Family receives and completes the application
2. Names are chosen randomly- if a student's sibling is chosen they will be the next in line for a grade level spot.
3. Remaining names are placed on a waitlist and if seats become available students will be called from the waitlist

Questions?

Contact Calcy Blackwood

[cblackwood@baltimorecp.org](mailto:cblackwood@baltimorecp.org)

410-396-9140

## **What makes our after school program great?**

### **Academics--Enrichment-- Electives-- Family Events**

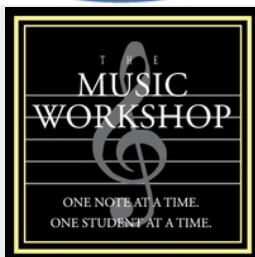
**Academics:** Students spend an hour a day learning grade level content focused on Reading, Mathematics, and Science.

**Enrichment:** Teaches students using nonstandard educational based learning like social emotional learning, STEAM, Art, and Music.

**Past Electives:** Dance, Music (Violin, Keyboard, Music Production), Soccer, Baseball, Girls on the Run, Robotics Club, Someone Special Club, Yoga

**Past Events:** Monthly House day with families to celebrate academic success and attendance, Yearly Fall Fest, Winter Ball - student dance, Wolfe Street on Ice, Movie Night, Wolfest, Spring Ball- student dance

## **Our Partners**



For a full list of our current funders, please visit our website.





# Summer School



Wolfe Street Academy hosts a summer school program.

## Basic information

**When:** June - July

**Times:** 7:30-2:25

**Days:** Monday - Thursday

**Grades:** Kindergarten - 5th grade

## **How do I sign up?**

Admission is lottery based.

1. Family receives and completes the application
2. Names are chosen randomly- if a student's sibling is chosen they will be the next in line for a grade level spot.
3. Remaining names are placed on a waitlist and if seats become available students will be called from the waitlist.



## **What does a day look like in the summer school program?**

- 3 hours of grade level academics
- 2 hours of enrichment
- Electives

## **Extra Events**

- Weekly Field Trips
- Annual Family Beach Day

**Past electives include:** Food and Nutrition, Art, Social Emotional Learning, and Sailing



For a full list of our current funders, please visit our website.

# Community Schools

As our Lead Agency, Elev8 Baltimore supports our community school initiative with providing us a Community School Coordinator. **Mrs. Heidi Weiss-Beedie** can help you and your family with your needs. The support given is confidential and tailored specifically to you.

For more information or to schedule a meeting call:  
**410-396-9140 or [hweiss-beedie@elev8baltimore.org](mailto:hweiss-beedie@elev8baltimore.org)**



**Bilingual in  
Spanish and  
English**

## Services Provided:

- Food
  - Soup Kitchen
  - Food Bank/ Food Distribution
- Housing
  - Emergency Shelter
- Trauma Services
  - Domestic Violence / Abuse
  - Grief and Loss
- Healthcare
- Mental Healthcare
  - Counseling / Therapy
- Immigration
- Food Stamps and other applications
- Employment/ Job support
- Family Reunification
- Acculturation - adapting to life in the US



Mrs. Weiss-Beedie can direct you to other community services as well.  
Come and talk to her today!

• • • • •  
• • • • •  
• • • • •



# Connect with us & increase your child's success!



Ensure your child comes to school on time

Attend our Morning Meeting

Participate in Parent / Teacher conferences

Check our Facebook page often

Attend Back to School Night

Contact our Community School Coordinator

Ensure your contact information is up to date in our system

Join the PTA

Check your child's backpack daily

Sign up for texts, calls, and emails

Attend events & family meetings

Communicate with your child's teacher



If you are interested in purchasing Wolfe Street clothing please scan this QR code!

For more information on events or resources please visit our website:



[www.wolfestreetacademy.org](http://www.wolfestreetacademy.org)

# Staff Directory

Please find the staff directory below.

**All emails end with: @bpcs.k12.md.us**

ADMINISTRATION/OFFICE STAFF		
NAME	BCPS PREFIX/EMAIL	POSITION
Gaither, Mark	cgaither	Principal
Jones, Tierra	tsydnorjones	Secretary
Chicas, Silvia	sychicasrivas	ELD Paraeducator
HOMEROOM TEACHERS		
Benhart, Ashley	akbenhart	Kindergarten
Boebinger, Jen	jpboebinger	5th
Cadwallader, Kelly	kcadwallader	2nd
Calvano, Carolyn	cccalvano	4th
Lopez Franco, Erika	elopezfranco	1st
Leaman, Claire	celeaman	3rd
Luna, Jeanette	jcluna	1st / 2nd
Munoz, Olgarina	omunoz	3rd
Pintuck, Jennifer	jaingersollpintuck	Pre-Kindergarten
Richardson, Briana	bjrichardson	Kindergarten
Spady, Brianna	bspady	5th
Thorpe, Scarlett	sthorpe	4th
Williams, Kelly	kdwilliams	Special Educator

# Staff Directory

All emails end with: @bpcs.k12.md.us

ELD TEACHERS		
NAME	BCPS PREFIX/EMAIL	POSITION
Bucke, Liz	jebucke	ELD- 5 <sup>th</sup> grade
Jameson, Ashley	anjameson	ELD- 3 <sup>rd</sup> grade
Olmeda, Yong	yolmeda	ELD- 2 <sup>nd</sup> grade
McGrath, Kim	kamcgrath	ELD- 1 <sup>st</sup> grade
Craig, Anne	acraig	ELD- 4 <sup>th</sup> grade
Wagner, Emily	emwagner	ELD- Kindergarten
RESOURCE TEACHERS		
Bevacqua, Laura	lyoder	Art Teacher
Mavias, Michael	mtmavias	Physical Education
Laurier, Amanda	alaurier	Science Education
PARAEDUCATORS / ASSISTANTS		
Ryan, Virginia	vdryan	PARA - Pre-K
Cano, Liz	ecano	PARA - 5th grade
Deloatch, Syeria	sadeloatch	PARA - 2nd grade
Guzman, Javier	xguzman	Health & Safety
Hubbard, Briana	bhubbard	PARA
Paige, Yunikia	ypaige	PARA- Kindergarten
Rodriguez, Lupita	lrodriguez	PARA - 3rd grade
TUTOR		
Fischel, Christine	cfischel	Tutor



# Staff Directory

All emails end with: @bpcs.k12.md.us

## SUPPORT STAFF/ TEACHERS

NAME	BCPS PREFIX/EMAIL	POSITION
Weiss-Beedie, Heidi	hweiss-beedie@elev8baltimore.org	Community School Coordinator
Dorchak, Rachel	rldorchak	ESOL Educational Associate
Green, Ashley	atgreen	Academic Coach
Hutchinson, Jaclyn	jhutchinson; jburge18@jhmi.edu	Mental Health Counselor
Shutt, Joanna	jmsbutt	School Nurse
Blackwood, Calcy	cjoyner01; cjoyner@baltimorecp.org	Out of School Time Director
Kickbush, Katrina	kkickbush	Special Educator
Long, Tiffany	tlong; tlong@baltimorecp.org	Director of Student Wellness
Simhi, Julie	jsimhi	Social Worker & IEP/504/SST

## OPERATIONS / FACILITIES

Evans, Victoria	vevans	Cafeteria Manager
Glorioso, Martina	mgglorioso	Lead Custodian
		Cafeteria Assistant

## ITINERANT SUPPORT STAFF

Amick, Kyla	kcamick	Speech Language Pathologist
Goldschmidt, Adena	abgoldschmidt	Occupational Therapist
Malamut, Samantha	samalamut	School Psychologist

# Brag Page!

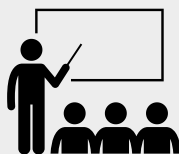


Wolfe Street Academy has been celebrated for many years for its excellence in education and its involvement in the community.

Check out some of these articles about our school!



Baltimore Students  
Marvel at Solar  
Eclipse



AFT visits Wolfe  
Street Academy



Family Social  
Studies Night



MD Report Card



How a community  
school helps ELLS  
succeed



Video from AFT Visit



The promise of  
Community  
Schools



Addressing Children's  
Mental Health



Ms. Pintuck wins  
the Brenda Kahn  
Award!



In defense of  
public education



Events at Wolfe



Title I information





# Contact Information

📞 +1-410-396-9140

Principal Mark Gaither

✉️ [cgaither@bcps.k12.md.us](mailto:cgaither@bcps.k12.md.us)

🏠 245 S. Wolfe Street

Baltimore, MD 21231

🌐 [www.wolfestreetacademy.org](http://www.wolfestreetacademy.org)



---

Information/ Policy in this handbook is subject to change based on district wide or school based updates.